



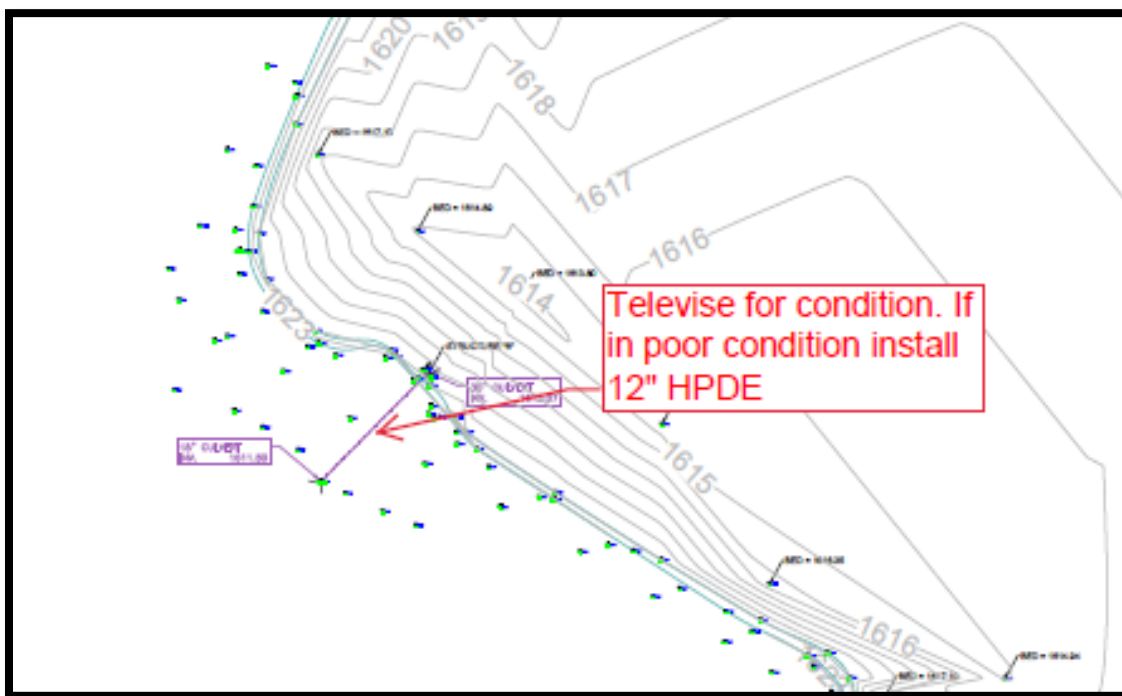
Update for the Pipke Park Ponds Project (PPPP)

12/02/2022

Below are the proposed modifications to the ponds. Please review, and let's discuss these and make sure the Town is on board with this.

North Pond

1. The North Pond dewatering outlet at the northwest corner is generally in good condition. At the request of the DNR, the pipe should be televised. If the pipe is in poor condition or if televising is not possible, a 12-inch HPDE pipe could be inserted as a sleeve and grouted in place. This new pipe should extend the life of the pipe for many years. Insertion of the pipe sleeve would require dewatering.

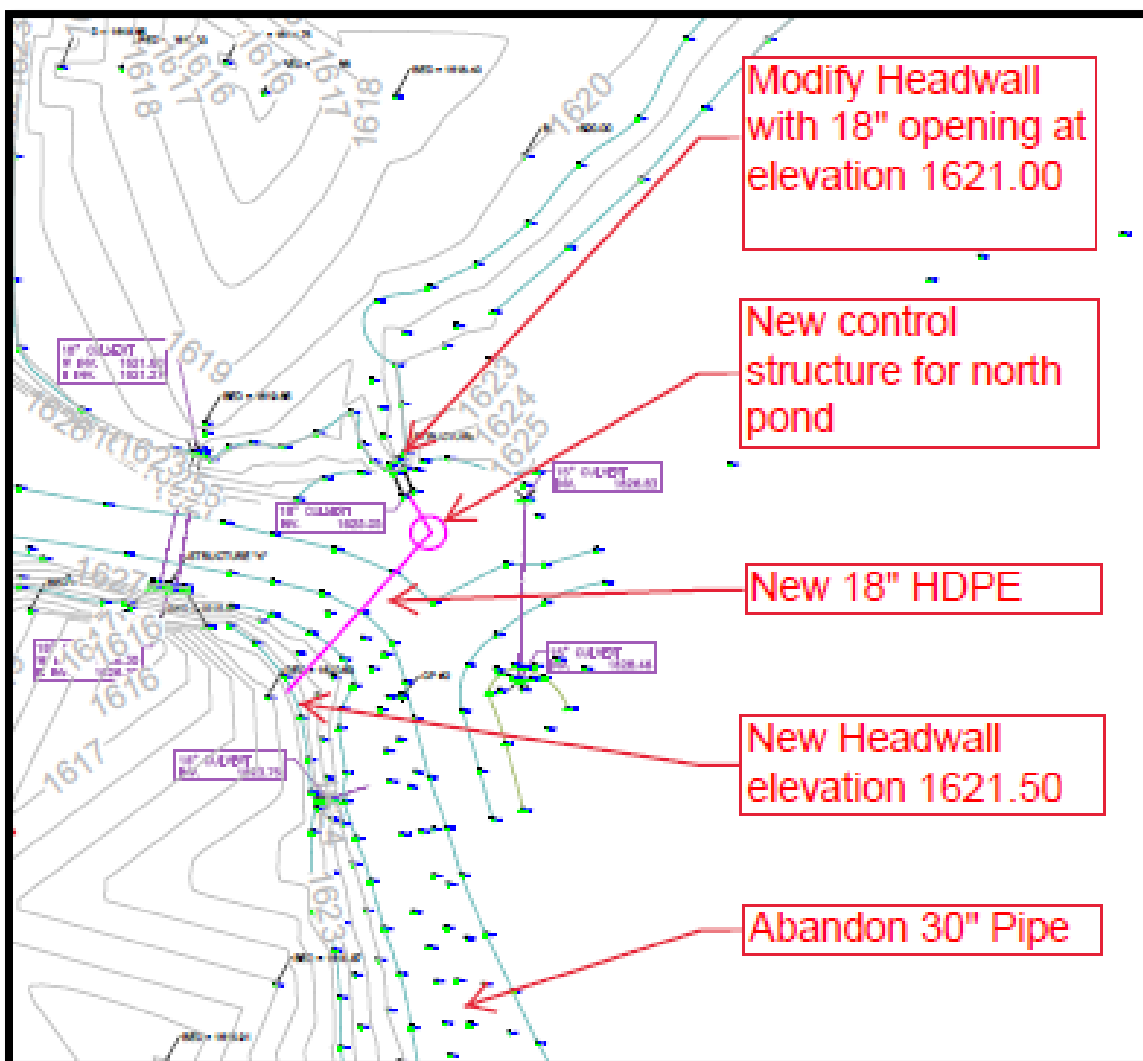


Preliminary Budget - Construction: approximately 140 ft of 12-inch HPDE with grouting: \$15,000



2. Abandon the existing 30-inch pipe from Little Horsehead Creek to the North Pond by plugging each end with concrete or filling the pipe with low-strength material (CLSM). Costs for CLSM would need to be explored further.

The North Pond will need an inflow of fresh water to keep the pond full if the 30-inch pipe is abandoned. A new 18-inch HPDE pipe is recommended from the South Pond east of the embankment separating the ponds. Abandoning the existing opening in the headwall structure at the southeast corner of the North Pond and coring or cutting a new opening at elevation 1621.0 is recommended. A new control structure to control water flow between the ponds or modifications to the existing headwall to control water depths would be required.

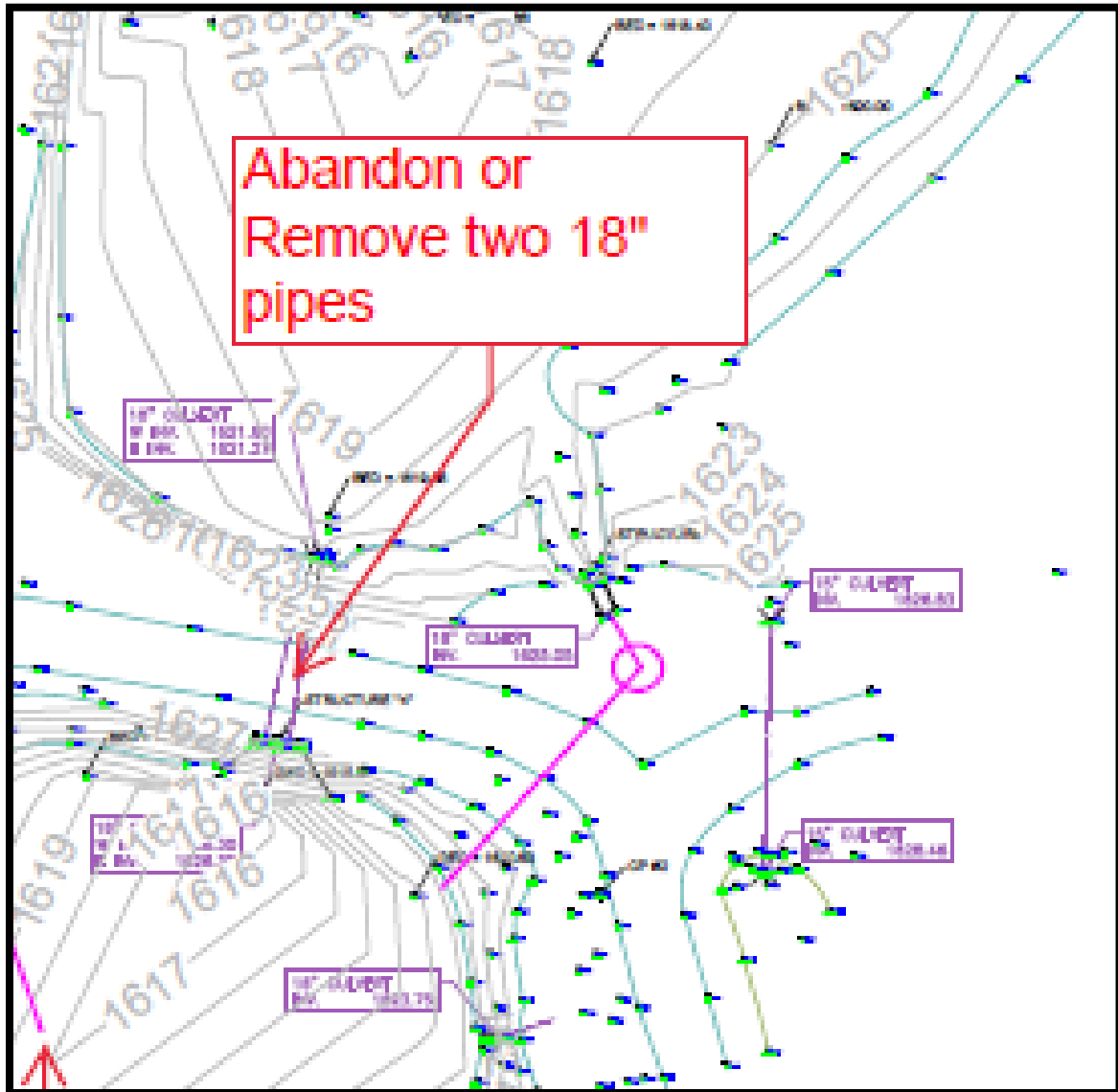


Preliminary Budgets

- Abandon 30-inch pipe by plugging each = \$1,000
- Construction: 108-ft of 18-inch HPDE via open trench with bentonite clay plug at the South Pond headwall, manhole structure, and headwall modifications at South Pond = \$17,500

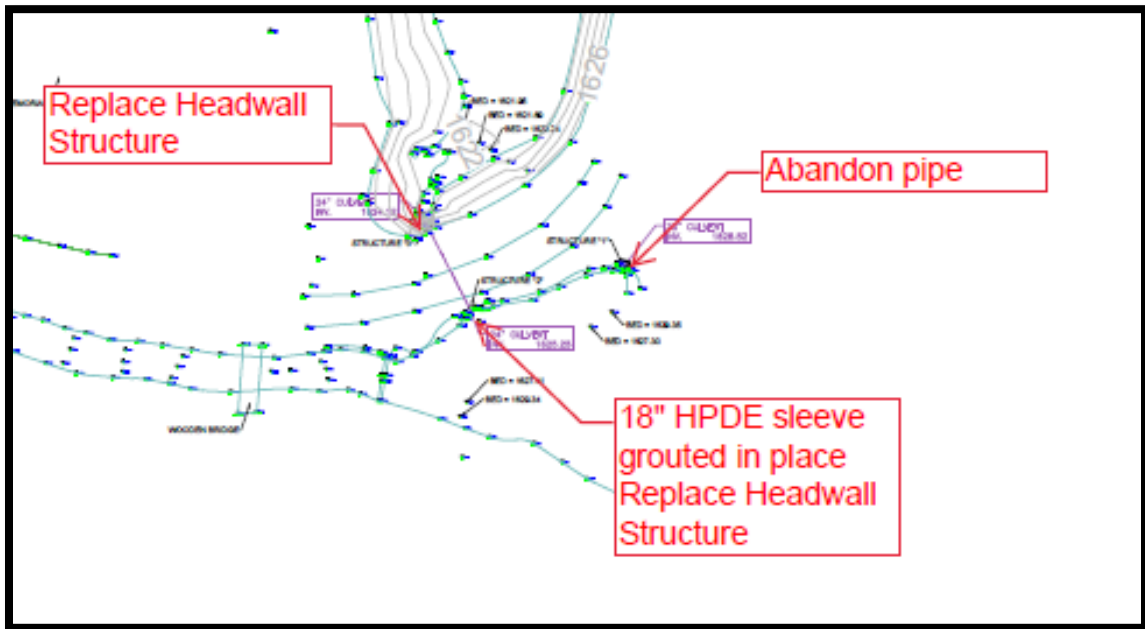
South Pond

1. Abandon or remove the two temporary 18-inch culverts between the North Pond and South Pond.



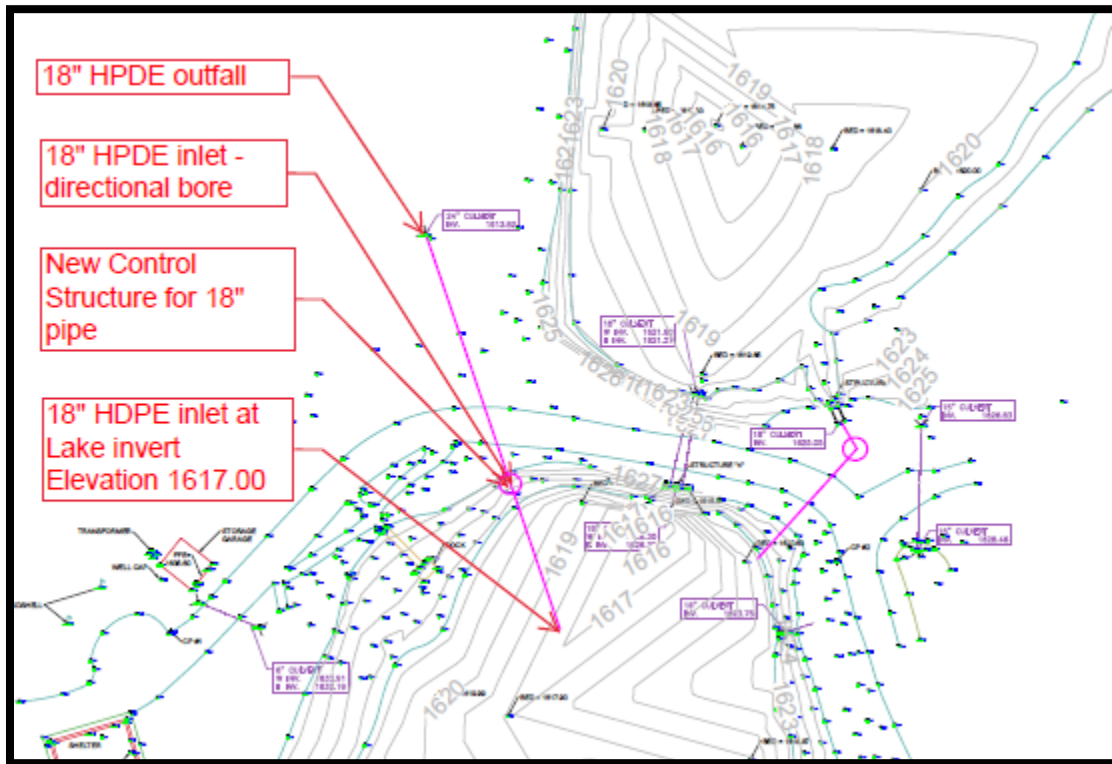
Preliminary Budget - 8 CY of CLSM pumped into the pipe = \$2000

2. Reconstruct or replace the headwall structure at the southeast corner of the South Pond. Installation of an 18-inch HPDE sleeve grouted into the existing 24-inch CMP is recommended. Replacement of the headwall structure at the inlet to the South Pond is also recommended.



Preliminary Budget - 50-ft of 18-inch HPDE grouted in pipe, new headwall, replacement inlet structure at Little Horsehead Creek = \$12,500

- The South Pond needs a dewatering outlet as the current configuration does not allow for adequate dewatering to meet WDNR requirements. A new outlet at the northwest corner of the South Pond is recommended. This would replace the existing 24-inch pipe that is filled with concrete. An 18-inch HPDE pipe is recommended, along with a new outlet control structure. Directional boring or micro tunneling is recommended for minimal disruption to the existing embankment.



Preliminary Budget - 250 ft of 18-inch HPDE directional bored, control structure, new headwall, abandon existing 24-inch pipe = \$45,000

